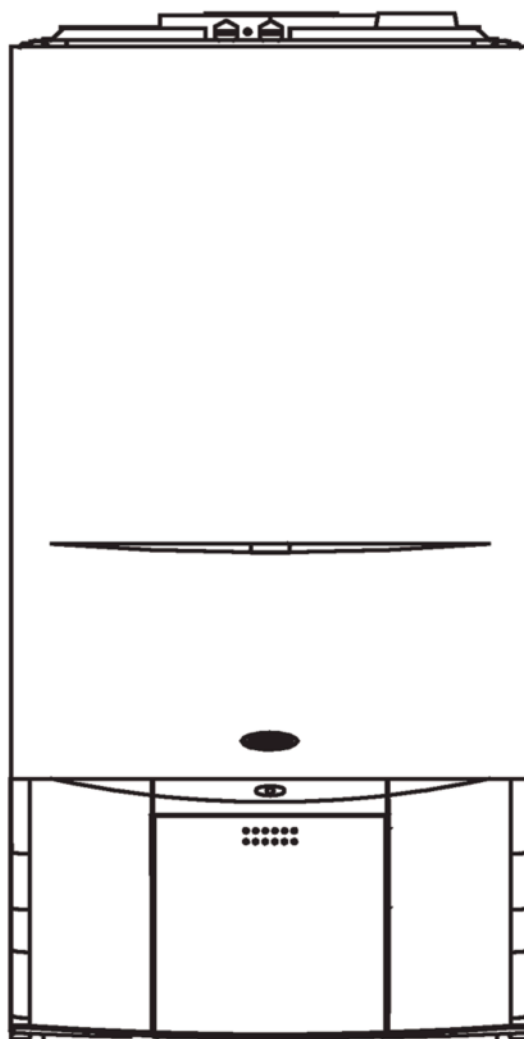


Linea 24 Mark 3

Serial Number with X in



Controls and Accessories	Part Number	Controls and Accessories	Part Number
CLOCK - MECHANICAL	201	CLOCK - DIGITAL	202
CONVERSION KIT LPG - NG	01005225	CONVERSION KIT NG - LPG	0594
HORIZONTAL FLUE TERMINAL	2359029	VERTICAL FLUE TERMINAL	2359039

Case Components

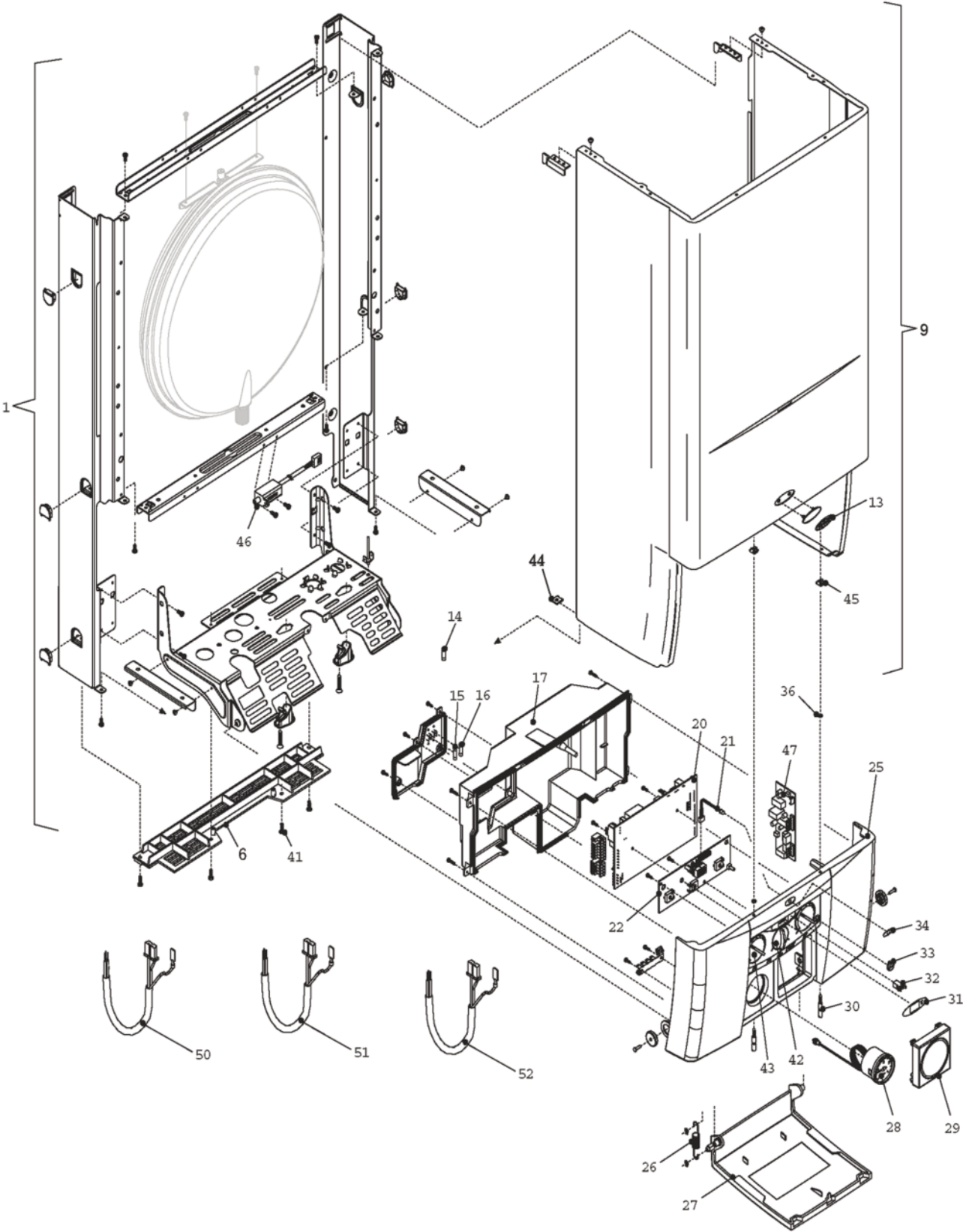
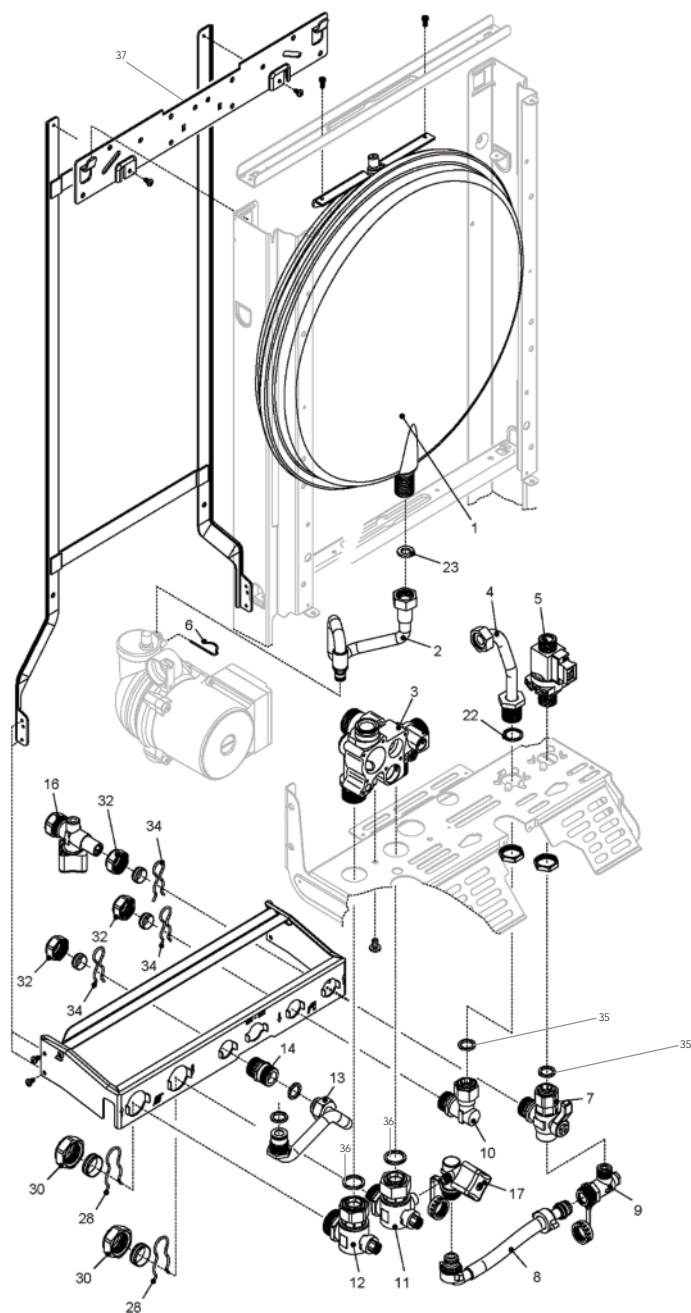


Table on next page

Case Components - Table

Position	Description	Part Number
1	FRAME	01005133
6	GUARD	1913
9	CASE	1880
13	PLASTIC TRADE MARK LABEL	1781
15	2A FUSE	8968
16	100 MA FUSE	1947
17	PCB COVER	10021849
20	MAIN PRINTED CIRCUIT BOARD	10024528
21	LED LIGHT GUIDE	1858
22	CONTROL PRINTED CIRCUIT BOARD	10024558
25	INSTRUMENTAL PANEL	10021951
27	DOOR PANEL	1862
28	PRESSURE GAUGE	1857
29	HOLE CAP	8654
30	PIN	1867
31	FILM FOR DISPLAY	1865
32	PUSH-PUSH COVER	1864
33	HOLE CAP	1861
34	PROTECTION FILM	1866
36	O-RING	1869
41	SCREW	5080
42	SELECTOR KNOB KIT	1860
43	CONTROL KNOB KIT	1859
44	EDGE CLIP	5128
45	NUT	5230
46	IGNITION TRANSFORMER	10022659
47	IGNITION MODULE	10028891
50	M9 TO M2 RIBBON CABLE FROM MAIN PCB	10021117
	TO DISPLAY	
51	CLOCK WIRE	1980
52	INTERNAL CLOCK WIRE	1780

Frame Assembly



Position	Description	Part Number
1	EXPANSION VESSEL	2204
2	FLEXIBLE PIPE	10023603
3	HEATING DISTRIBUTOR MANIFOLD	10020439
4	PIPE	1631
5	DHW ACTUATOR	10022349
6	CLIP	10027757
7	WATER SUPPLY STOP COCK	10023567
8	FLEXIBLE PIPE	10023570
9	NON RETURN VALVE	10023569
10	CONNECTION	1790
11	HEATING COCK	10023566
12	HEATING COCK 22MM	1789
13	SAFTEY VALVE OUTLET TAIL	10023643
14	NIPPLE	1793

Position	Description	Part Number
16	WATER SUPPLY STOP COCK	1749
17	WATER SUPPLY STOP COCK	10023568
22	WASHER	5208
23	WASHER	5026
28	CLIP	1820
30	NUT	1824
32	NUT	1823
34	CLIP	1890
35	WASHER	5236
36	WASHER	5237
37	HANGING BRACKET	1817
-	THREE WAY OVERHAUL KIT	01005127
-	SERVICE KIT INCLUDING DIAPHRAGM	T0063

Hydraulic Components

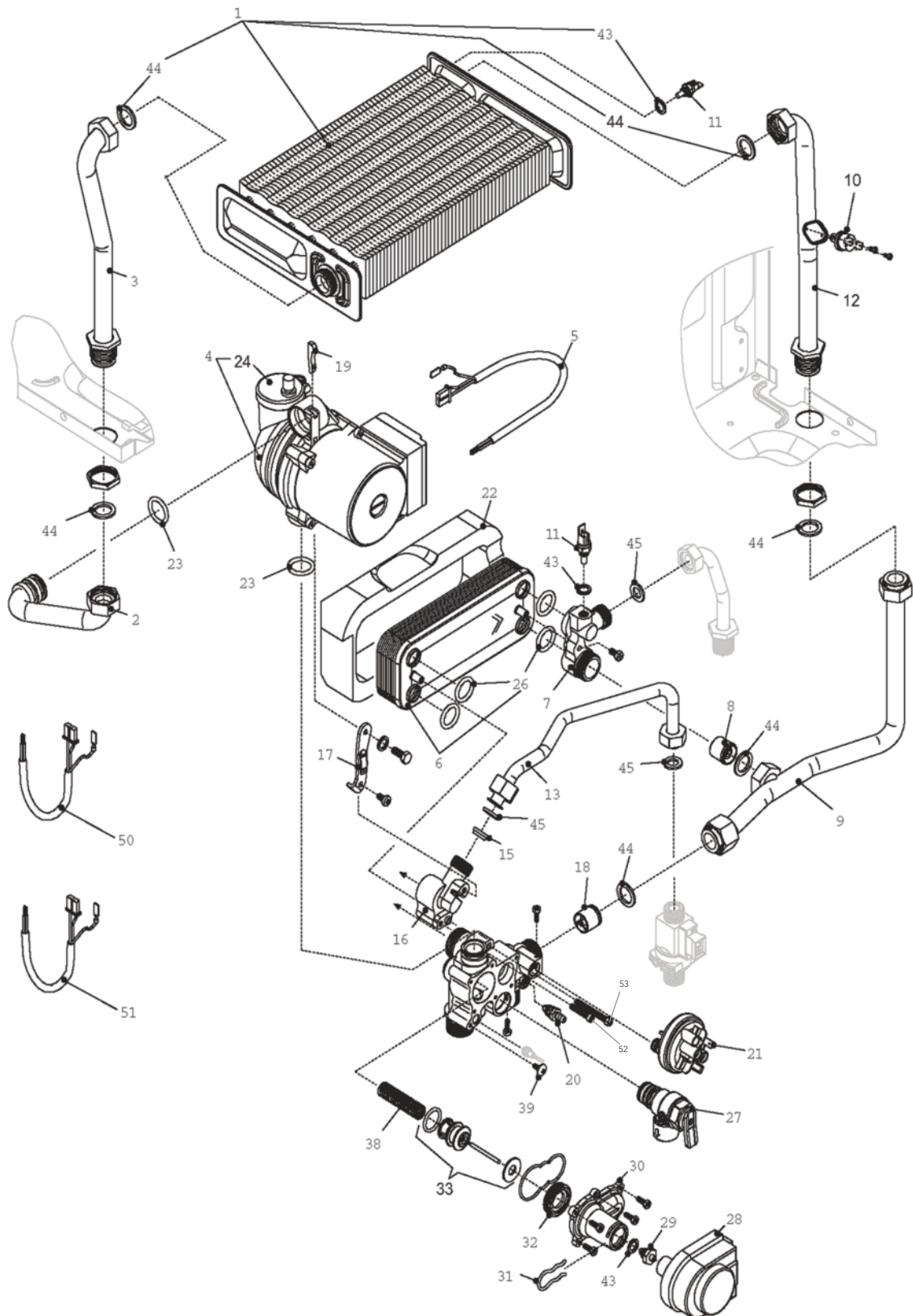
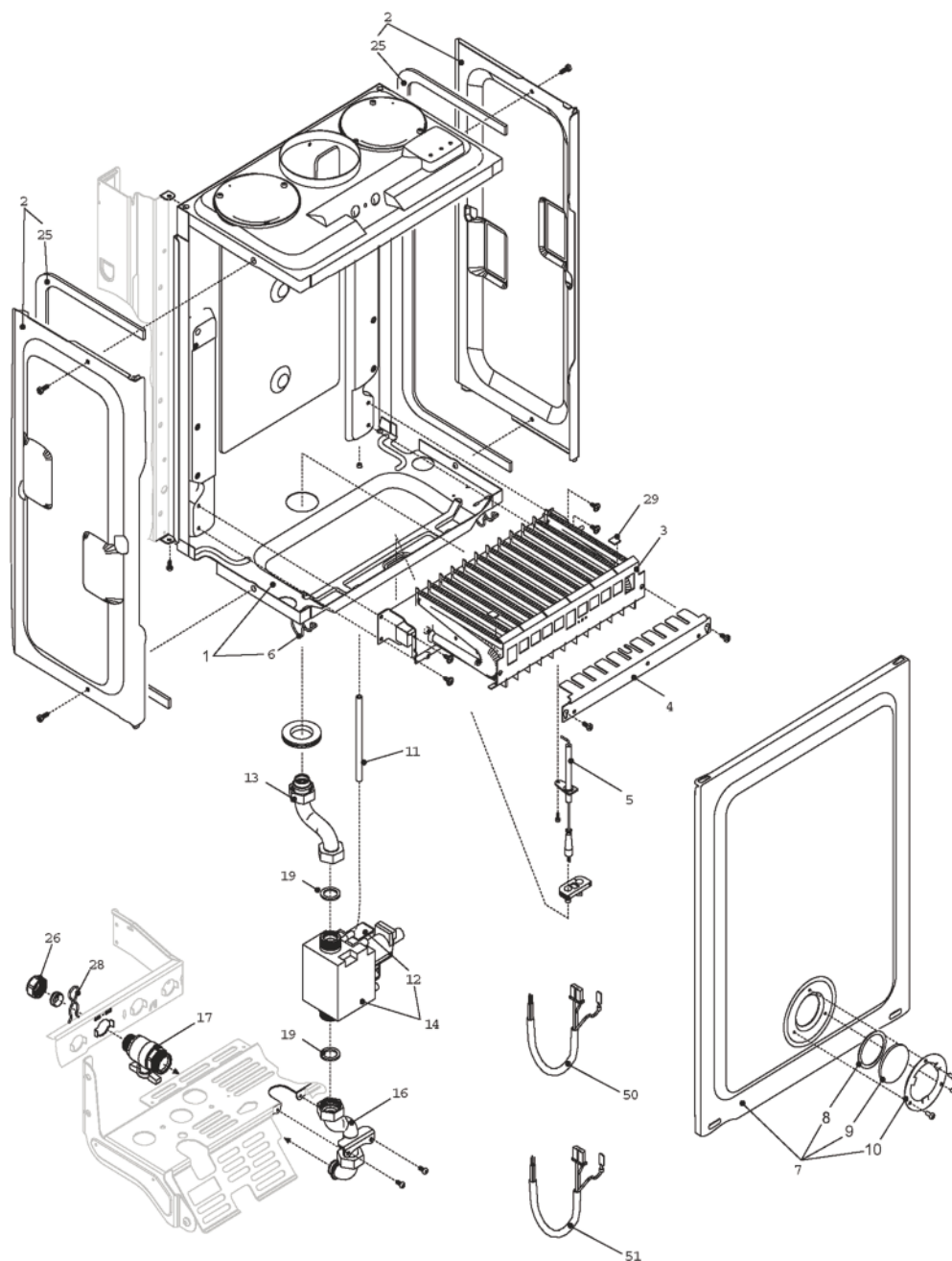


Table on next page

Hydraulic Components - Table

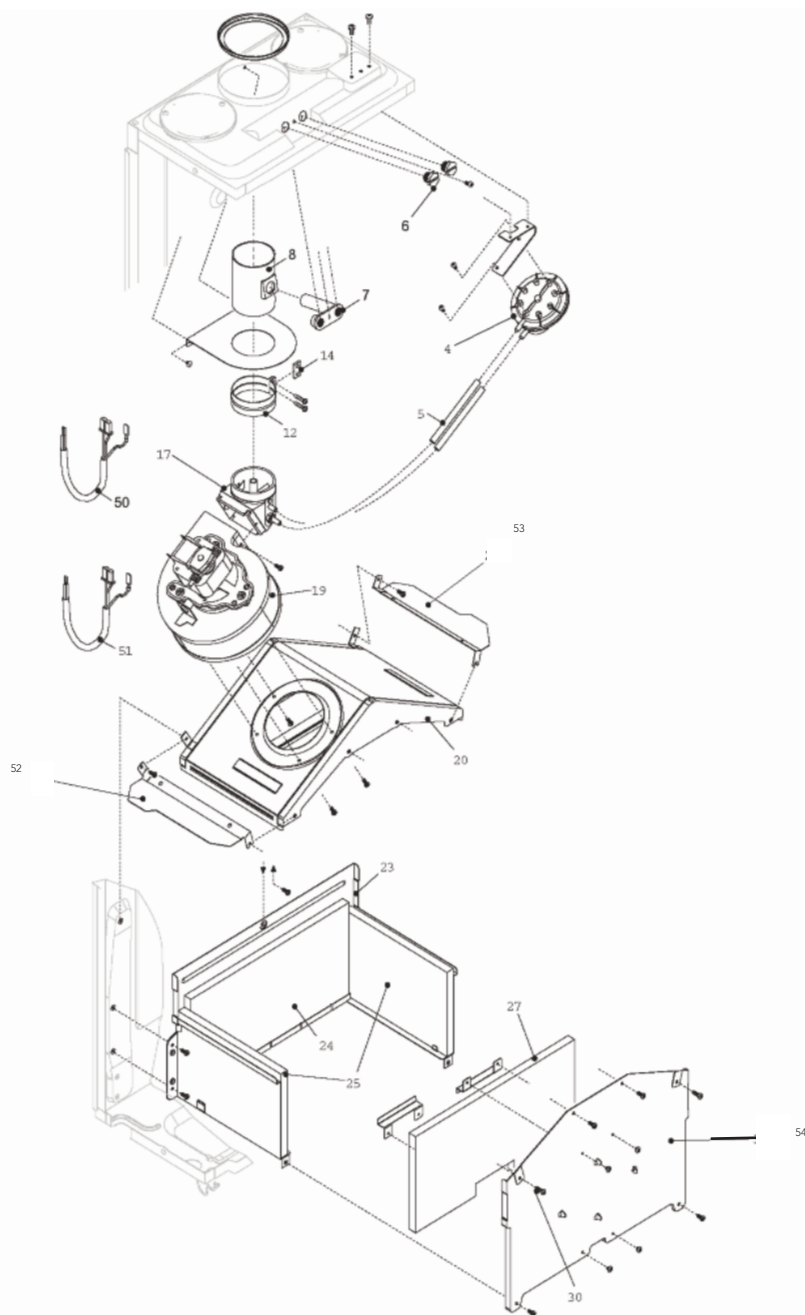
Position	Description	Part Number
1	HEAT EXCHANGER	01005245
2	PUMP PIPE	1848
3	PIPE	1847
4	PUMP	10021792
5	M15 TO PUMP WIRING	1845
6	DOMESTIC WATER HEAT EXCHANGER	8036
7	CONNECTION	9807
8	NON RETURN VALVE	2908
9	PIPE	10023198
10	HIGHT LIMIT THERMOSTAT	2258
11	NTC SENSOR	10027352
12	FLOW PIPE	10021041
13	PIPE	10022125
15	FLOW GOVERNOR (WHITE)	8008
16	CONNECTION	2903
17	BRACKET	2940
18	BY-PASS VALVE	2047
19	PUMP LOCK KEY	9263
20	VENTING PLUGS KIT	01005137
21	WATER PRESSURE SWITCH	10028141
22	HEAT INSULATOR	20007057
23	O RING	6898
24	AUTOMATIC AIR VENT BOTTLE	0439
26	O-RING	7999
27	SAFETY VALVE	1806
28	MOTORIZED VALVE	2905
29	O-RING CONNECTION	6919
30	THREE WAY VALVE COVER	10020335
31	FIXING FORK WRENCH	2906
32	SEATING PLATE	7134
33	THREE WAY VALVE OVERHAULT KIT	01005127
38	SPRING	6862
39	SCREW	6903
43	WASHER	5041
44	WASHER	5023
45	WASHER	5026
50	M5 TO DHW THERMISTER WATER PRESSURE SWITCH & DHW FLOW SWITCH WIRING	10020530
51	M11 TO MOTORISED VALVE WIRING	1873
52	SCREW	5213
53	SCREW	5214

Air Box Components



Position	Description	Part Number	Position	Description	Part Number
1	AIR BOX BOTTOM	2072	12	GAS VALVE SOLENOID	20040675
2	AMBIDX AIR BOX SIDE	1549	13	GAS PIPE	1839
3	NG BURNER NP	10020104	14	GAS VALVE	20035533
3	LPG BURNER NP	5297	16	GAS PIPE	1840
4	CROSS LIGHTING STRIP	2068	17	GAS COCK	1787
5	SPARK ELECTRODE	10025891	19	WASHER	5023
6	AIR BOX CLIP	0442	25	COMBUSTION CHAMBER SEAL	5905
7	COVER	10020216	26	NUT	1823
8	WASHER	5072	28	CLIP	1890
9	GLASS	3139	29	NG PLATE	5172
10	GLASS FLANGE	4007	50	M14 TO IGN PCB & GAS VALVE WIRING	10021947
11	SILICONE TUIBE	1457	51	M4 TO IGNITION PCB & MOD COIL WIRING	10022112

Combustion Components



Position	Description	Part Number
4	AIR PRESSURE SWITCH	01005272
5	SILICONE TUBE	1457
6	BRASS CAP	8086
7	BLOCK WITH COMBUSTION CHECK	10026933
8	FAN FLUE CONNECTION	8083
12	CLAMP FOR 60 DIAM. TUBE	7315
14	WASHER CLAMP	7317
17	FAN TO FLUE CONNECTOR	10023181
19	FAN	5910
20	HOOD ASSEMBLY	1842
23	COMBUSTION CHAMBER ASSEMBLY	6027

Position	Description	Part Number
24	COMBUSTION BACK PANEL	5270
25	COMBUSTION LATERAL PANEL	5271
27	COMBUSTION FRONT PANEL	5269
30	SELF TAPPING SCREW	5080
50	M12 TO FAN WIRING	1870
51	M3 TO THERMISTOR, H/L STAT, BURNER STAT & PD SWITCH WIRING	10021236
52	FAN BAFFLE - LEFT HAND	5949
53	FAN BAFFLE - RIGHT HAND	5924
54	COVER - COMBUSTION CHAMBER	5908