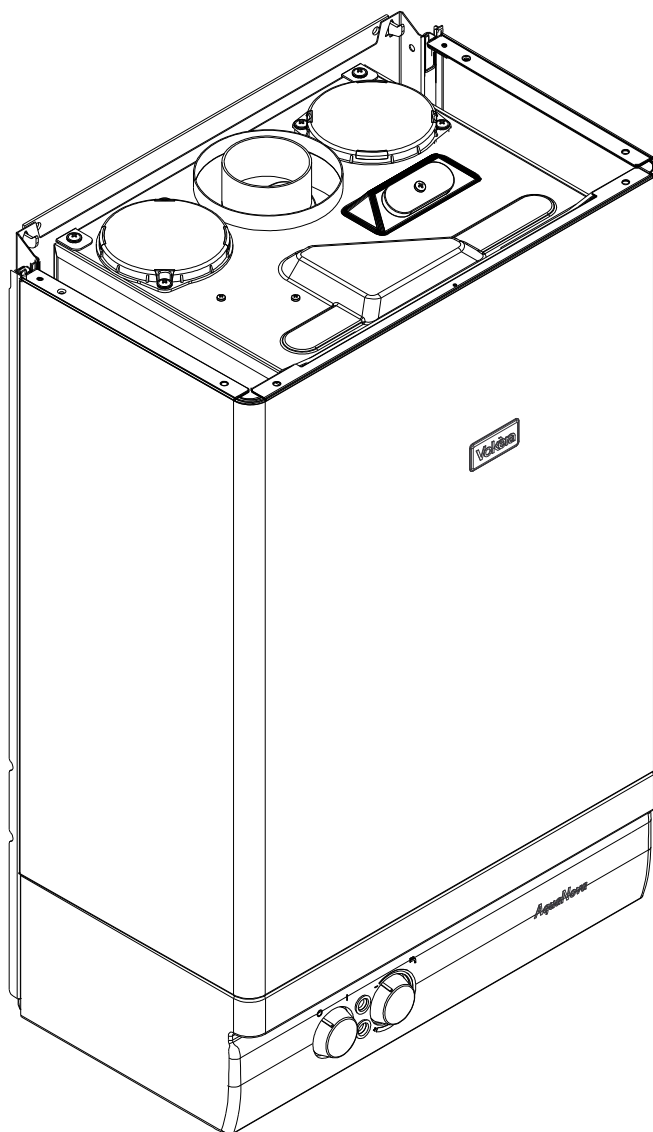
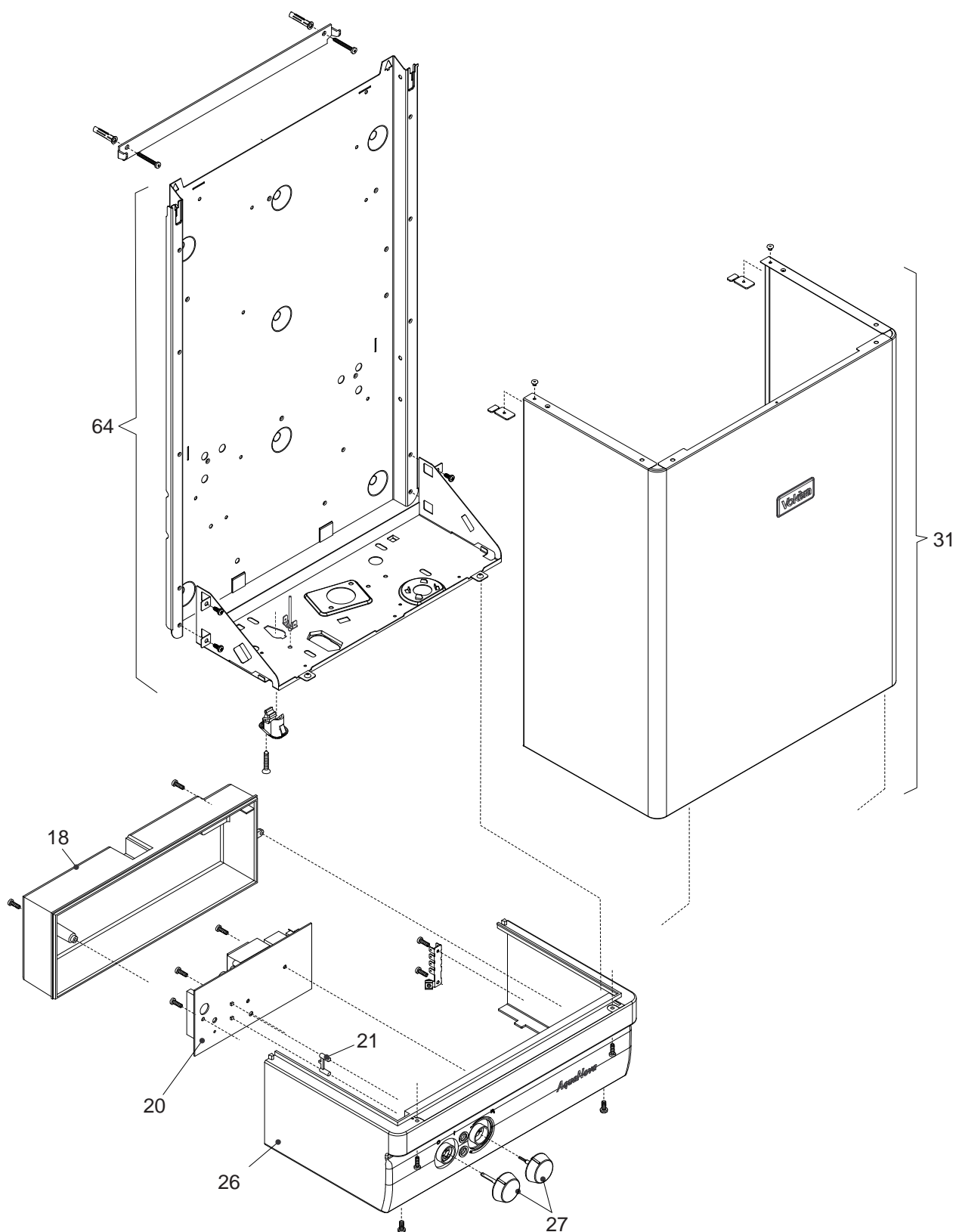


**Wall hung heater**

# Aqua Nova 17



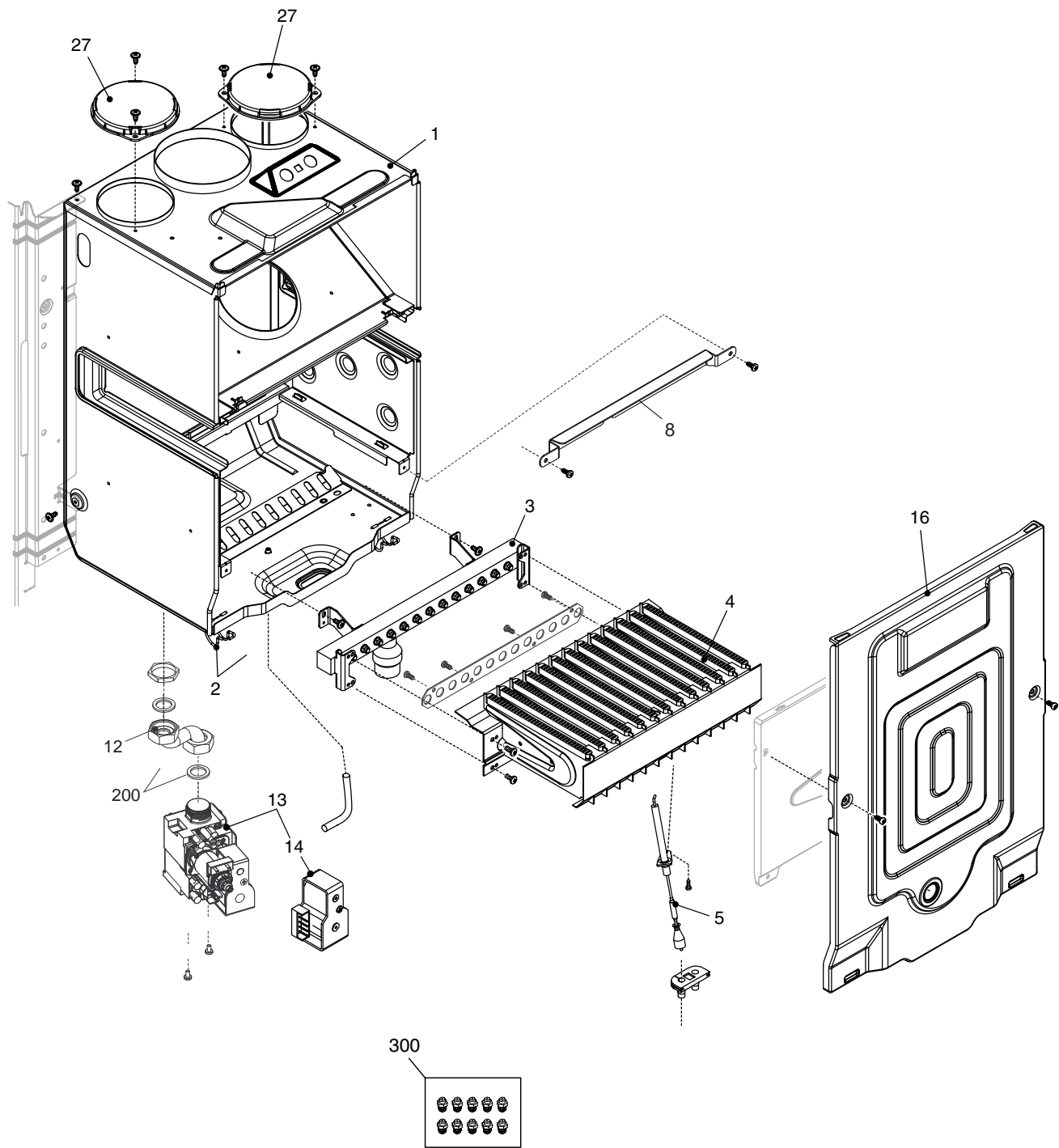
| MODEL        | PART NUMBER |          |
|--------------|-------------|----------|
|              | MTN         | GPL      |
| Aqua Nova 17 | 20109286    | 20109287 |



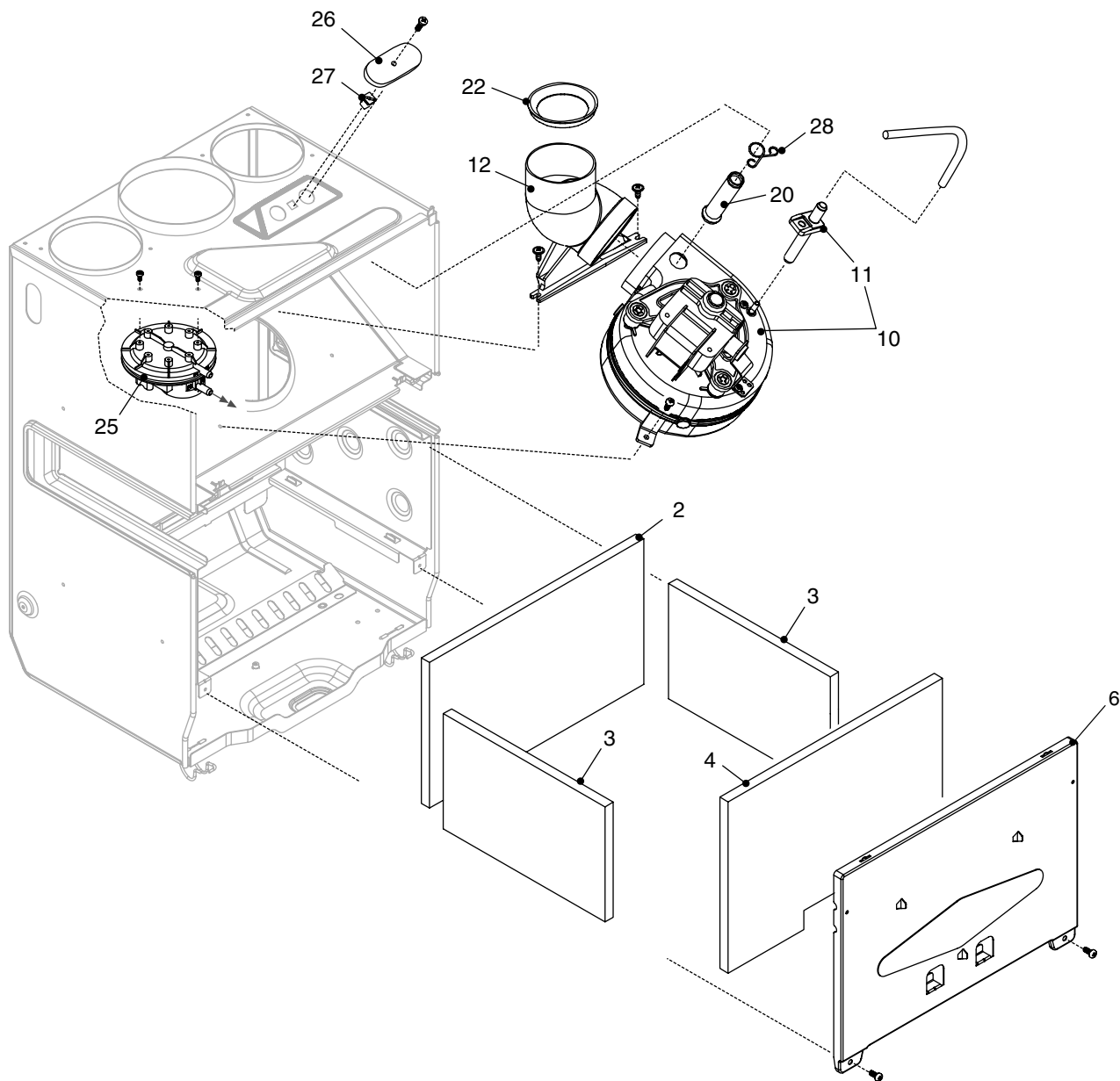
| POS. | DESCRIPTION           | 17        |
|------|-----------------------|-----------|
| 18   | Back cover panel      | R10021120 |
| 20   | Printed circuit board | 20115165  |
| 21   | Led light guide       | R10020676 |
| 26   | Instrumental panel    | 20118588  |
| 27   | Knobs kit             | 20072228  |
| 31   | Case Assembly         | 20118590  |
| 64   | Frame assembly        | 20118577  |
| 90   | Fuse                  | R3478     |



| POS. | DESCRIPTION           | 17        |
|------|-----------------------|-----------|
| 8    | Heat exchanger        | 20067270  |
| 12   | Washer                | R2226     |
| 24   | Flow governor         | R10025080 |
| 25   | Pipe                  | 20118573  |
| 26   | Dhw actuator          | 20069786  |
| 36   | Pipe                  | 20118574  |
| 201  | Washer                | R5026     |
| 527  | High limit thermostat | R10021235 |
| 679  | Clip                  | 20024086  |
| 680  | Washer                | 20024869  |
| 806  | NTC sensor            | 20067813  |
| 857  | Nipple                | 20115159  |

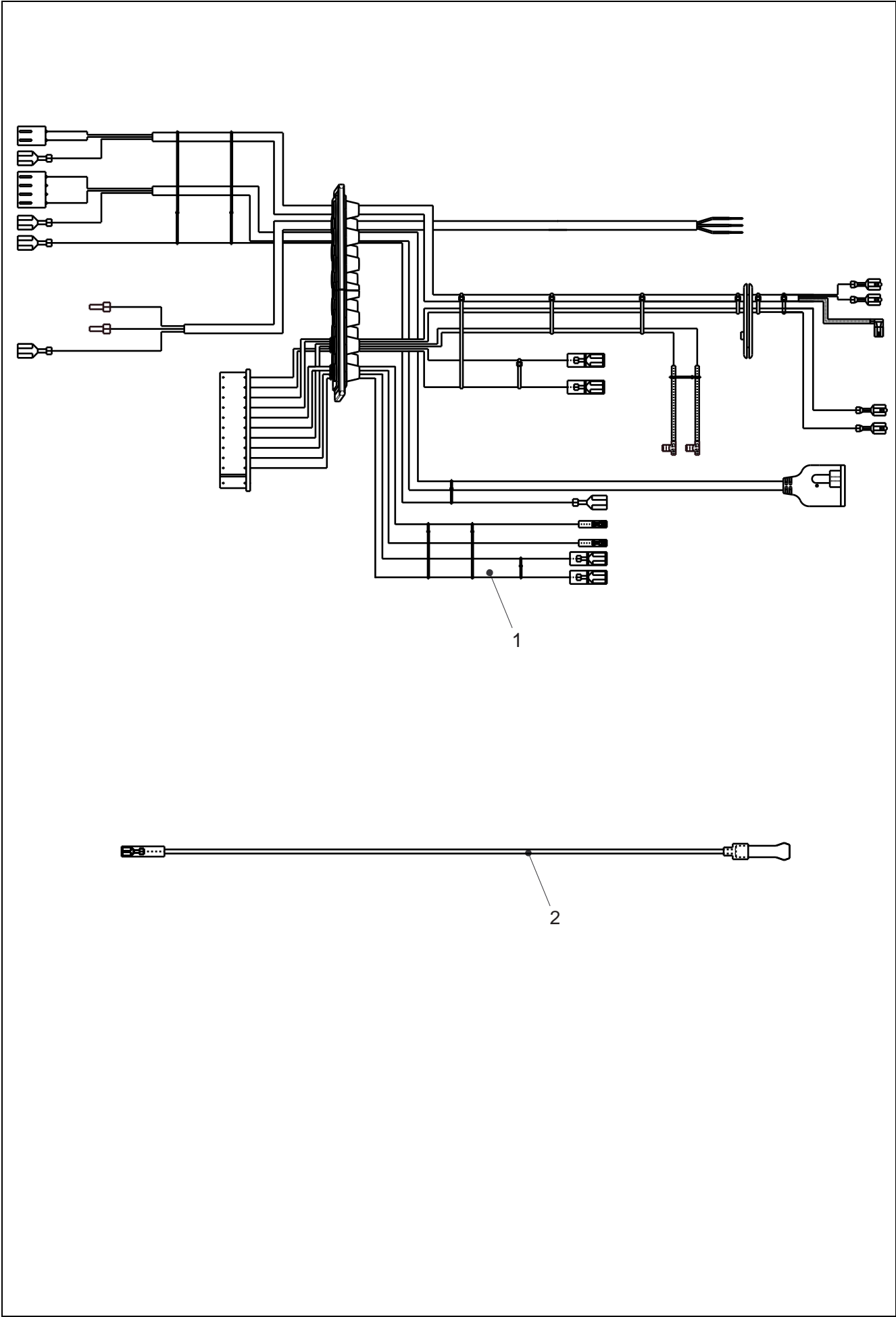


| POS. | DESCRIPTION                   | 17        |
|------|-------------------------------|-----------|
| 1    | Air box bottom                | R10024745 |
| 2    | Clip                          | R0442     |
| 3    | Main burner injector manifold | R10024742 |
| 4    | Burner                        | R10026102 |
| 5    | Spark-sense electrode         | 20118582  |
| 8    | Baffle                        | 20060717  |
| 12   | Pipe                          | 20118575  |
| 13   | Gas valve                     | 20007784  |
| 14   | Gas valve solenoid            | 20040675  |
| 16   | Air box cover                 | 20118530  |
| 27   | Hole cover                    | 20005586  |
| 200  | Washer                        | R5023     |
| 300  | NG conversion kit             | 20019506  |
| 300  | LpG conversion kit            | 20019507  |





| POS. | DESCRIPTION                         | 17        |
|------|-------------------------------------|-----------|
| 2    | Back insulatin panel                | R2230     |
| 3    | Combustion chamber insulation panel | R2231     |
| 4    | Combustion chamber insulation panel | R2232     |
| 6    | Combustion chamber front cover      | R10024670 |
| 10   | Fan                                 | R10023907 |
| 11   | Pressure tube                       | R10024191 |
| 12   | Fan connection                      | R10021972 |
| 20   | Fumes testing connection pipe       | R10021973 |
| 22   | Flue flange Ø 41                    | 20020390  |
| 22   | Flue flange Ø 43                    | 20020311  |
| 22   | Flue flange Ø 45                    | 20020309  |
| 25   | Pressure switch                     | R10023908 |
| 26   | Plug                                | R10020624 |
| 27   | Nut screw                           | R10020625 |
| 28   | Clip                                | R10020626 |



| POS. | DESCRIPTION           | 17       |
|------|-----------------------|----------|
| 1    | Power wiring harness  | 20118578 |
| 2    | Spark electrode cable | 20118580 |

| Rev. | data       | Descrizione   |
|------|------------|---|
| 1.0  | 26/04/2016 | Aggiunte posizioni alle rampe tavola 2 – Tolto kit trasformazione gas propano |
|      |            |   |
|      |            |   |




---

Vokera reserve the right to change the specifications without prior notice.  
Consumers' statutory rights are not affected.