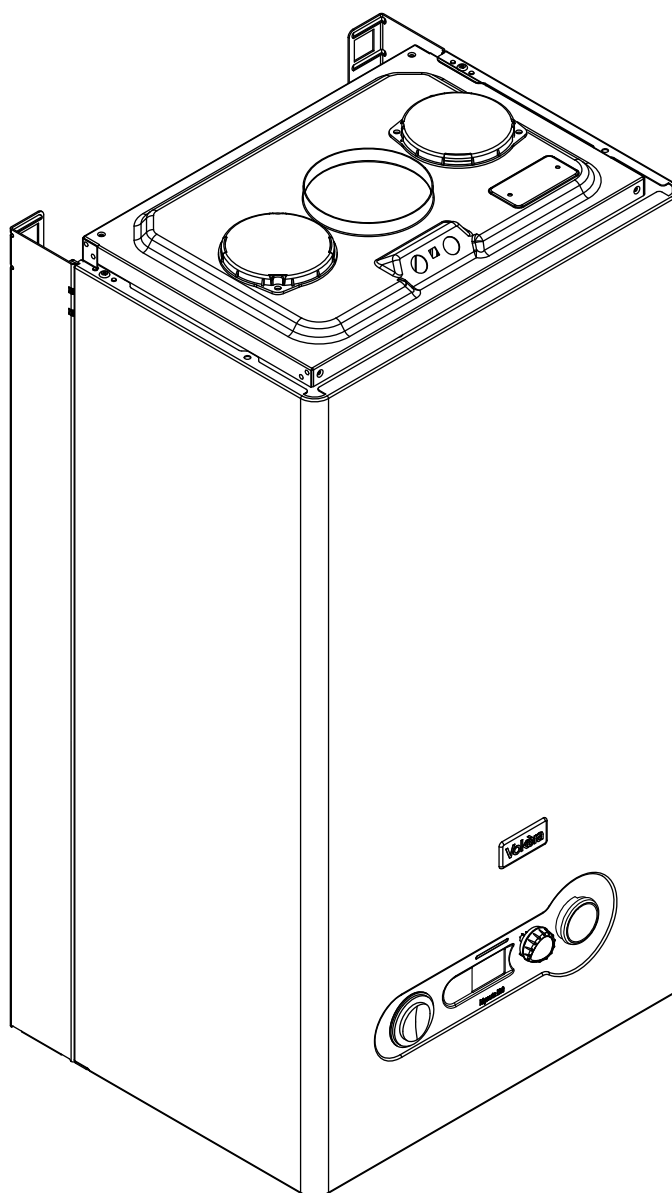
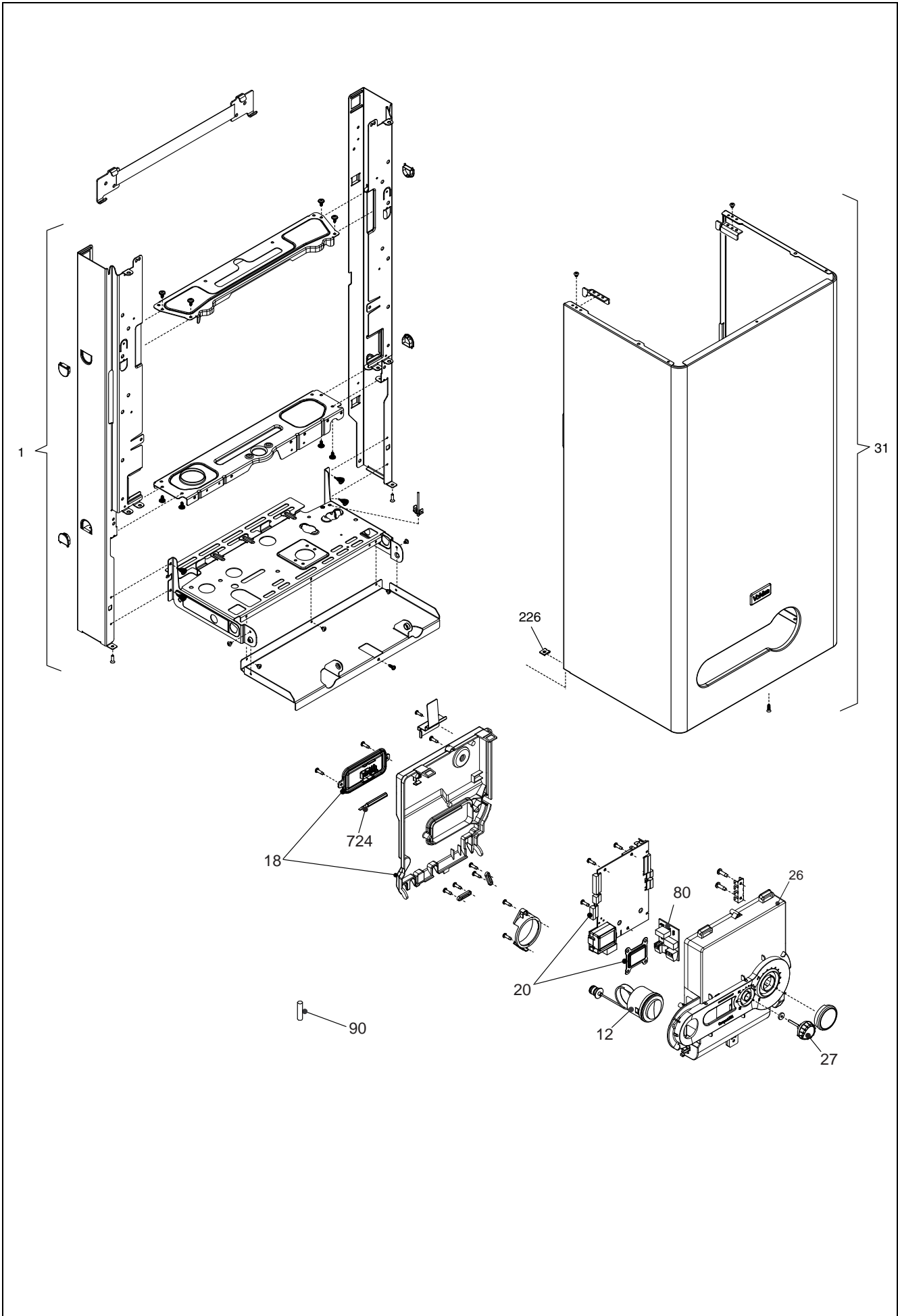


**Wall hung boilers**

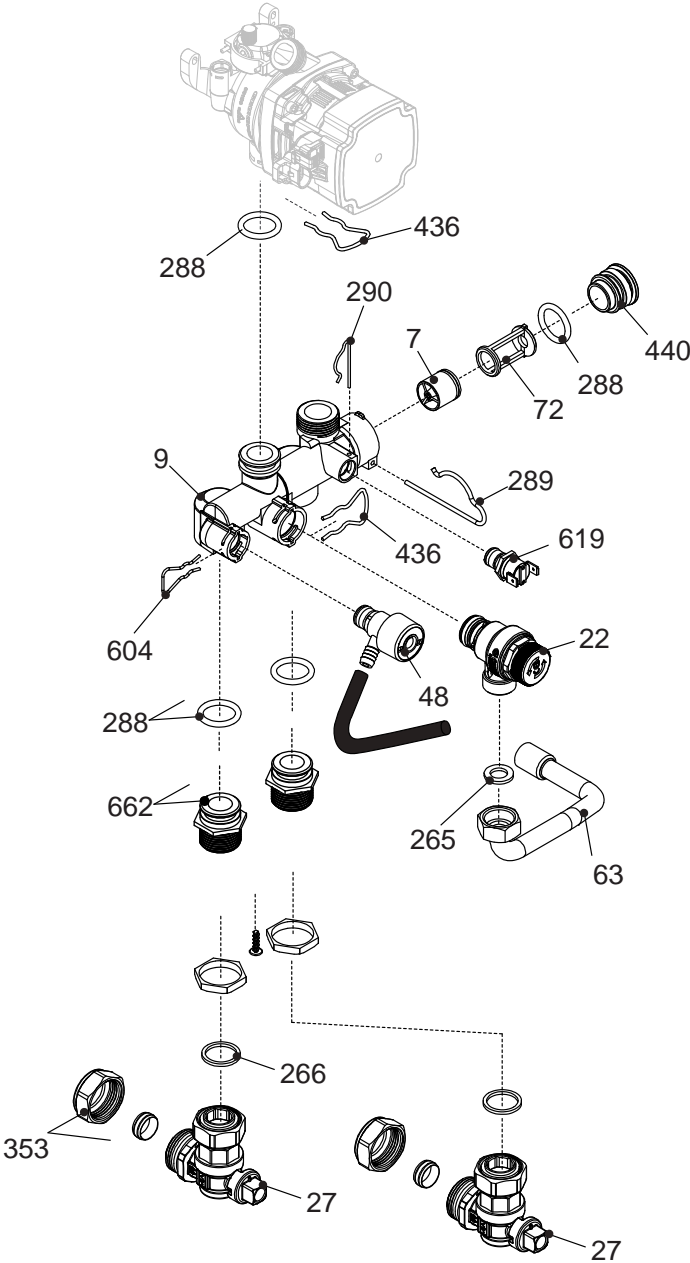
**Mynute i30**



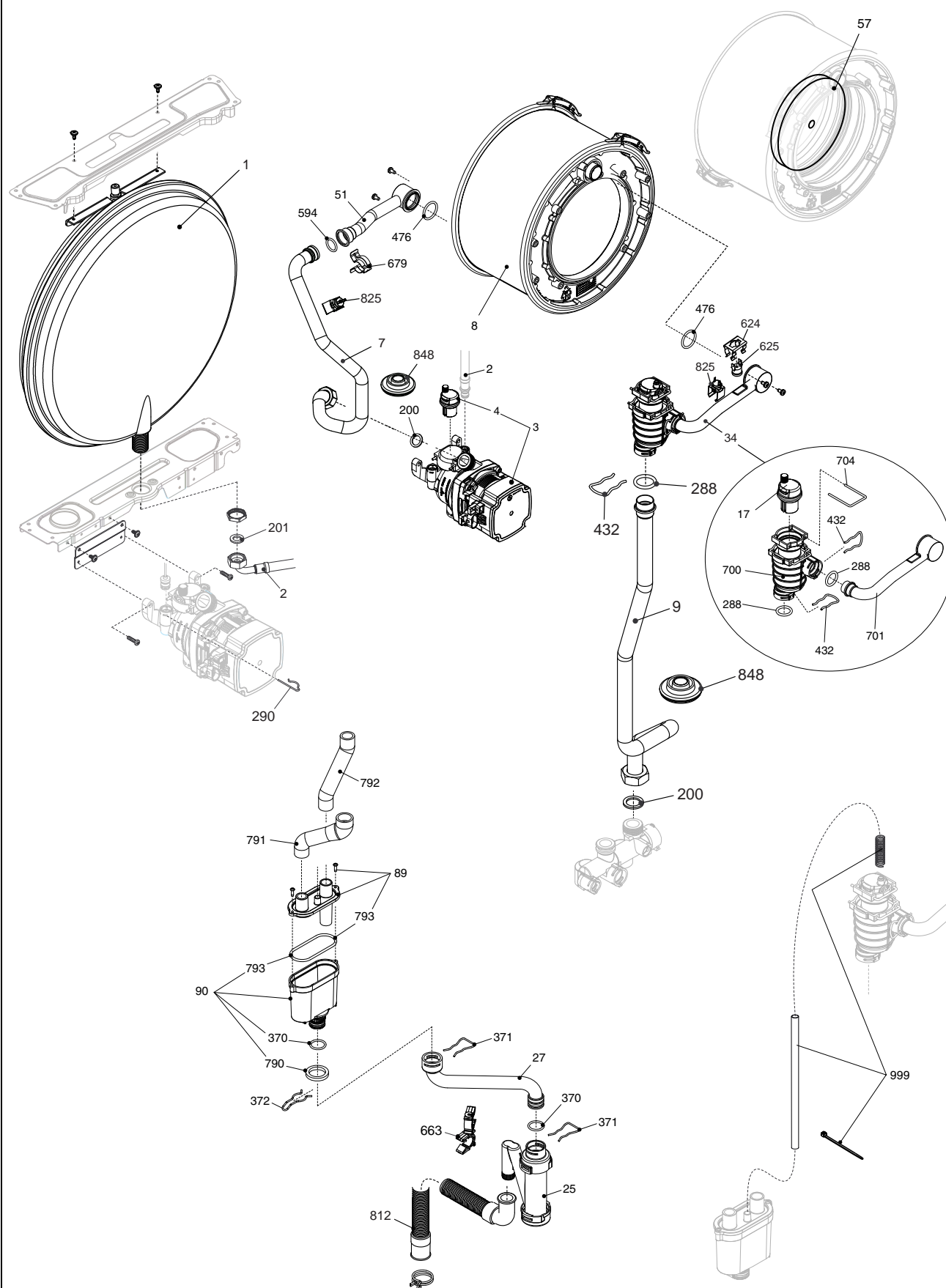
| MODEL             | PART NUMBER     |          |
|-------------------|-----------------|----------|
|                   | MTN             | GPL      |
| <b>Mynute i30</b> | <b>20101256</b> | <b>-</b> |



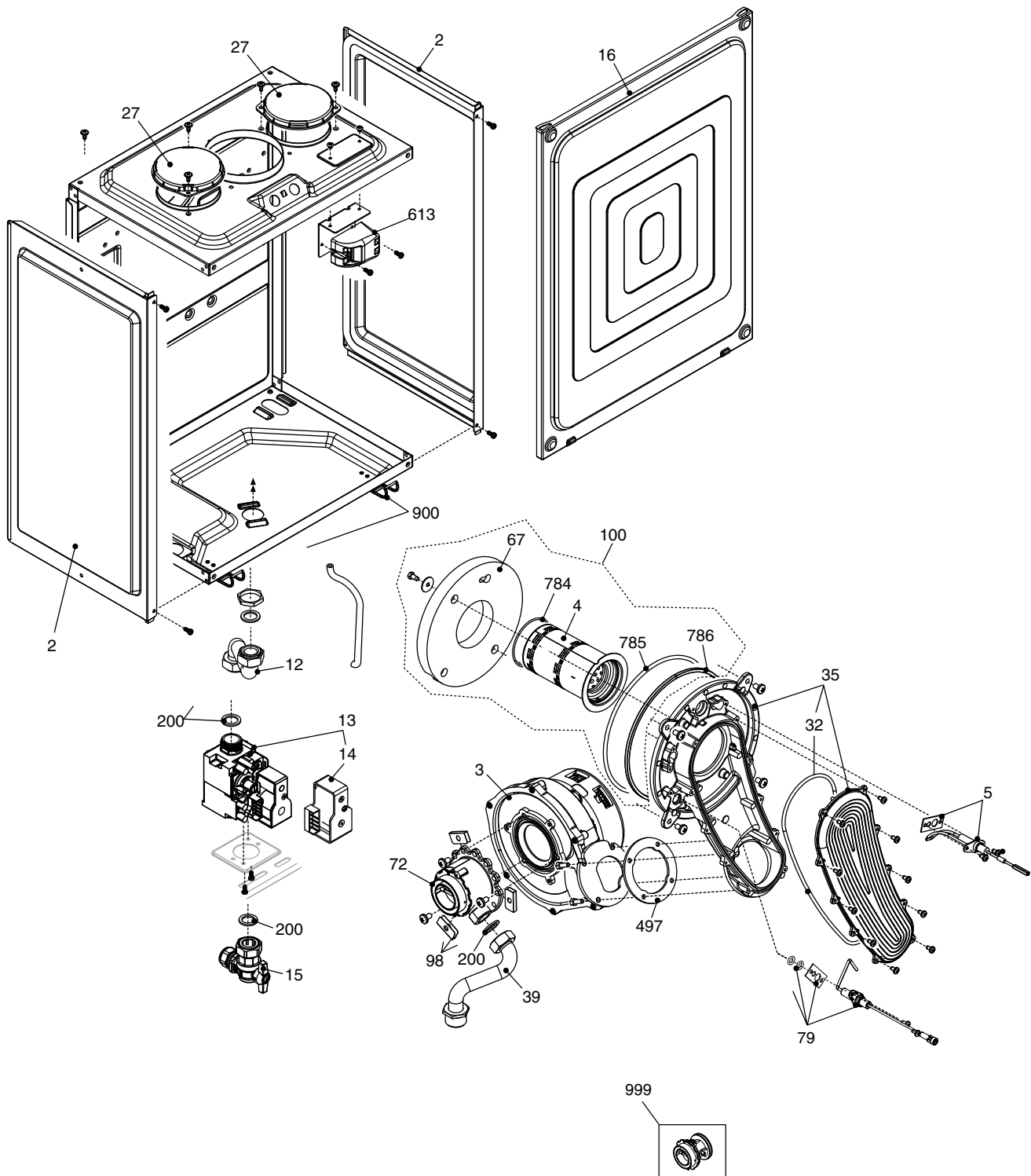
| POS. | DESCRIPTION             | i30      |
|------|-------------------------|----------|
| 1    | Frame assembly          | 20079833 |
| 12   | Pressure gauge          | 20042115 |
| 18   | Control panel cover     | 20101178 |
| 20   | Printed circuit board   | 20071334 |
| 26   | Instrument panel        | 20101188 |
| 27   | Knob                    | 20057330 |
| 31   | Case Assembly           | 20078173 |
| 80   | Printed circuit board   | 20076436 |
| 90   | Fuse                    | R3478    |
| 226  | Clip                    | R5128    |
| 724  | Calibration screwdriver | R2455    |



| POS. | DESCRIPTION            | i30       |
|------|------------------------|-----------|
| 7    | By-pass valve          | R1552     |
| 9    | Heating distrib.       | 20005568  |
| 22   | Safety valve           | 20043820  |
| 27   | Heating cock           | R1789     |
| 48   | Cock                   | 20000533  |
| 63   | Pipe                   | 20035609  |
| 72   | by-pass valve support  | 20068965  |
| 265  | Washer                 | R5236     |
| 266  | Washer                 | R5237     |
| 288  | Ring                   | R6898     |
| 289  | Clip                   | R2223     |
| 290  | Clip                   | R2165     |
| 353  | Nut                    | R1824     |
| 436  | Clip                   | R10025062 |
| 440  | Automatic by-pass plug | R10024645 |
| 604  | Clip                   | 20000539  |
| 619  | Pressure               | 20003181  |
| 662  | Connection             | 20014074  |

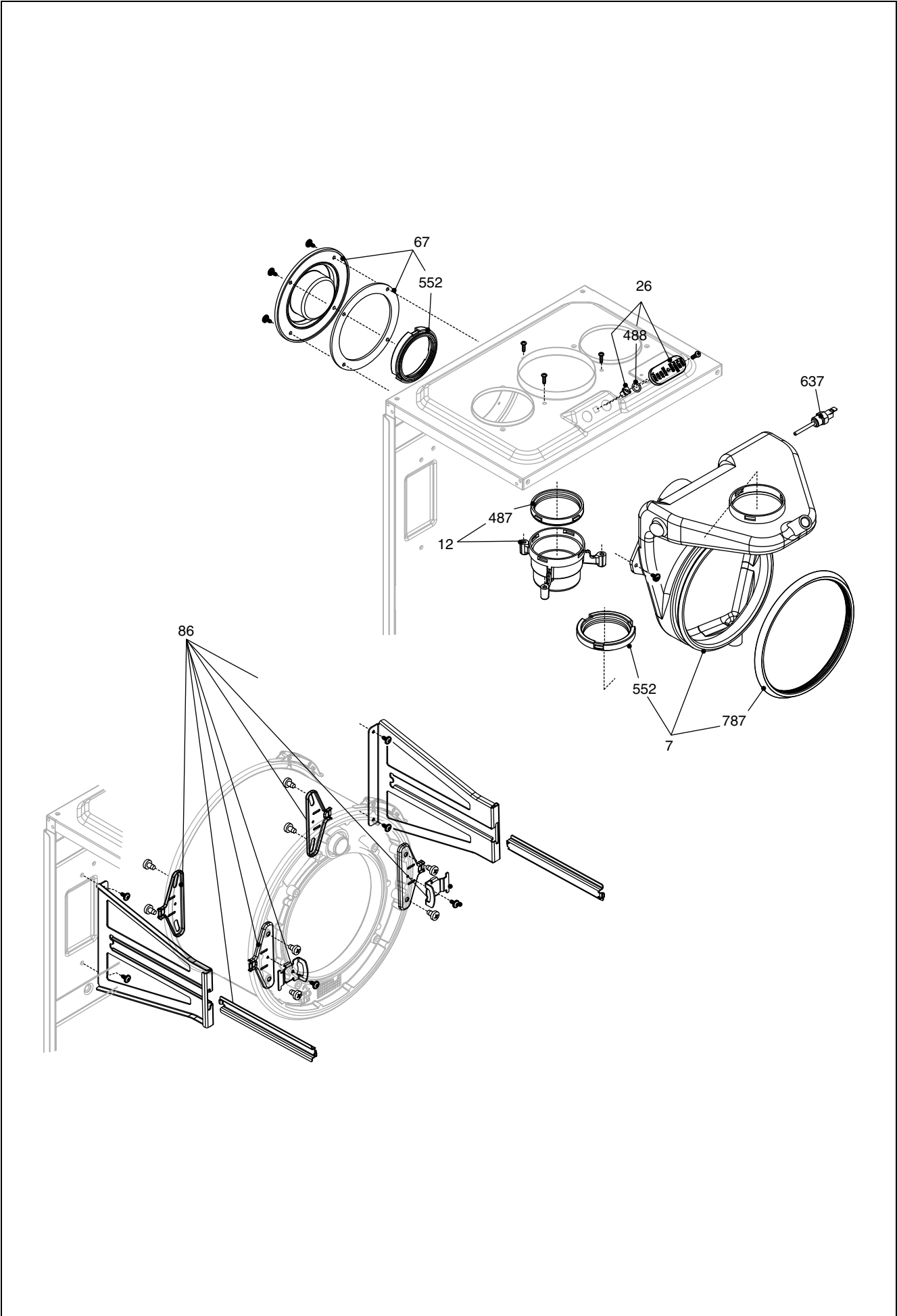


| POS. | DESCRIPTION                   | i30       |
|------|-------------------------------|-----------|
| 1    | 8 lt. expansion vessel        | R2204     |
| 2    | Pipe                          | R10025188 |
| 3    | Pump                          | 20099105  |
| 4    | Air vent bottle               | R10025485 |
| 7    | Pipe                          | 20104986  |
| 8    | Condensing exchanger assembly | 20058630  |
| 9    | Pipe                          | 20104988  |
| 17   | Air vent valve                | 20019768  |
| 25   | Siphon                        | 20025733  |
| 27   | Condensation outlet tube kit  | 20025743  |
| 34   | Kit degasser + tube           | 20099548  |
| 51   | Pipe                          | 20057866  |
| 57   | Retarder insulating panel     | 20086269  |
| 89   | Siphon cover                  | 20063464  |
| 90   | Siphon                        | 20063463  |
| 200  | Washer                        | R5023     |
| 201  | Washer                        | R5026     |
| 288  | O ring                        | R6898     |
| 290  | Clip                          | R2165     |
| 370  | O ring                        | R10023533 |
| 371  | Clip                          | R10023532 |
| 372  | Clip                          | R2588     |
| 432  | Clip                          | R10024958 |
| 476  | O ring                        | R10026324 |
| 594  | O ring                        | 20000131  |
| 624  | Clip                          | R5472     |
| 625  | High limit thermostat         | 20005585  |
| 663  | Cable holder                  | 20014197  |
| 679  | Clip                          | 20024086  |
| 696  | O ring                        | 20028744  |
| 700  | Degasser kit                  | 20032553  |
| 701  | Pipe                          | 20067580  |
| 704  | Clip                          | 20019767  |
| 790  | O-Ring                        | 20063468  |
| 791  | Condensation outlet tube      | 20063466  |
| 792  | Condensing pipe               | 20063467  |
| 812  | Condensation outlet tube      | 20076889  |
| 825  | NTC Detector                  | 20078350  |
| 848  | Fairlead                      | 20099541  |
| 999  | Degasser connection assembly  | 20096202  |

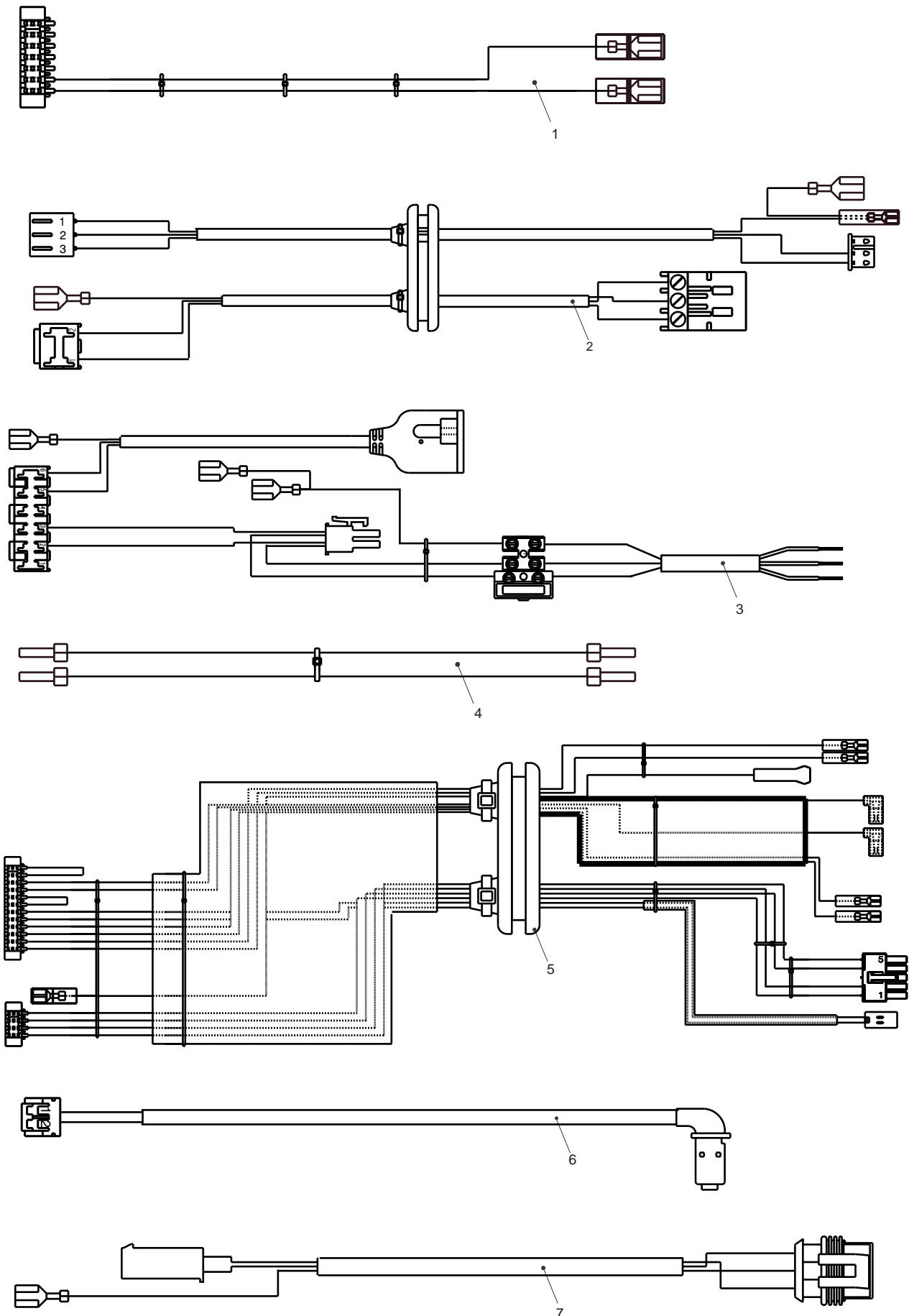




| POS. | DESCRIPTION          | i30       |
|------|----------------------|-----------|
| 2    | Air chamber side     | R10026231 |
| 3    | Fan                  | 20085965  |
| 4    | Burner               | 20087319  |
| 5    | Spark electrode      | 20119995  |
| 12   | Gas pipe             | R10028628 |
| 13   | Gas valve            | 20039202  |
| 14   | Gas valve solenoid   | 20040675  |
| 15   | 3/4" gas cock        | R10020897 |
| 16   | Air box cover        | R10028345 |
| 27   | Hole cover           | 20005586  |
| 32   | Washer               | 20057870  |
| 35   | Air/gas manifold     | 20057885  |
| 39   | Pipe                 | 20067585  |
| 67   | Washer               | 20057858  |
| 72   | Mixer                | 20087321  |
| 79   | Sensing electrode    | 20119996  |
| 98   | Spacer               | 20036990  |
| 100  | Burner assembly      | 20058633  |
| 200  | Washer               | R5023     |
| 497  | Washer               | R10026796 |
| 613  | Ignition transformer | 20001563  |
| 784  | O-Ring               | 20057871  |
| 785  | Washer               | 20057878  |
| 786  | Washer               | 20057872  |
| 900  | Clips                | 20061168  |
| 999  | Ng conversion kit    | 20086438  |
| 999  | Lpg conversion kit   | 20069593  |



| POS. | DESCRIPTION                  | i30       |
|------|------------------------------|-----------|
| 7    | Conveyor                     | 20057880  |
| 12   | Flue drain connection        | R10028421 |
| 26   | Cap smoke analysis           | 20089999  |
| 67   | Top flue outlet blanking cap | 20057882  |
| 86   | Bracket-kit                  | 20058636  |
| 487  | Washer Ø 60                  | R10026345 |
| 488  | O ring                       | R10026494 |
| 552  | Washer Ø 60                  | R10028426 |
| 637  | Flue sensor                  | 20007050  |
| 787  | Washer Ø 160                 | 20057889  |



| POS. | DESCRIPTION          | i30      |
|------|----------------------|----------|
| 1    | Low tension cable    | 20035502 |
| 2    | Ignition cable       | 20057874 |
| 3    | Power wiring harness | 20069549 |
| 4    | Wiring harness       | 20076437 |
| 5    | Wiring harness       | 20076890 |
| 6    | Pump cable           | 20100812 |
| 7    | Pump cable           | 20104984 |

| Rev. | data       | Descrizione  |
|------|------------|--|
| 1.0  | 15/06/2015 | Aggiunto pannello isolante retarder scambiatore – Aggiunte trasformazioni gas  |
| 2.0  | 11/04/2016 | Inserita tavola per gestione disegni cablaggi elettrici – E00120160178 : elettrodi<br>E00120150485 : pannelli fonoassorbenti – Corretto codice vaso espansione |
|      |            |  |




---

Vokera reserve the right to change the specifications without prior notice.  
Consumers' statutory rights are not affected.